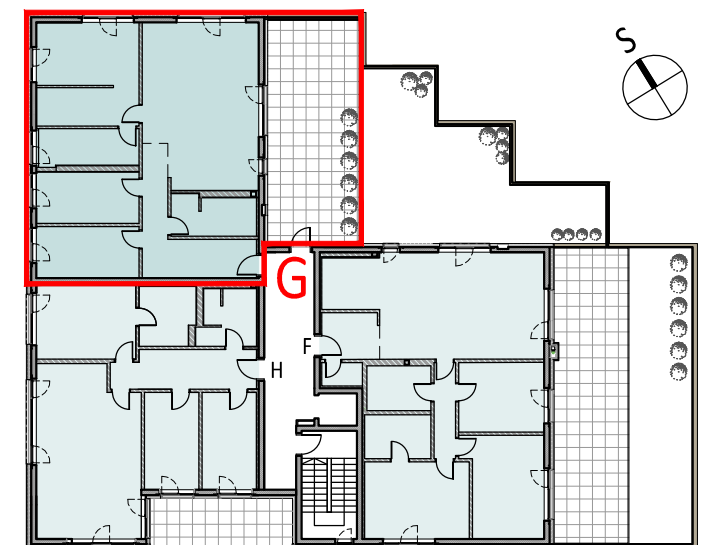
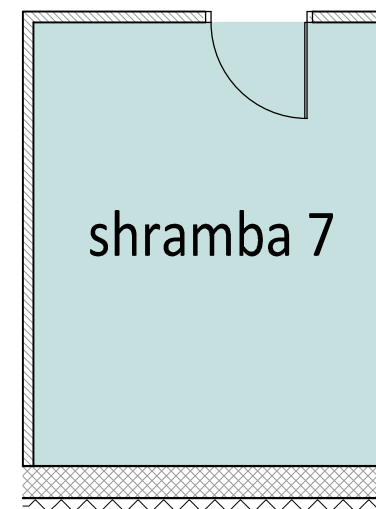
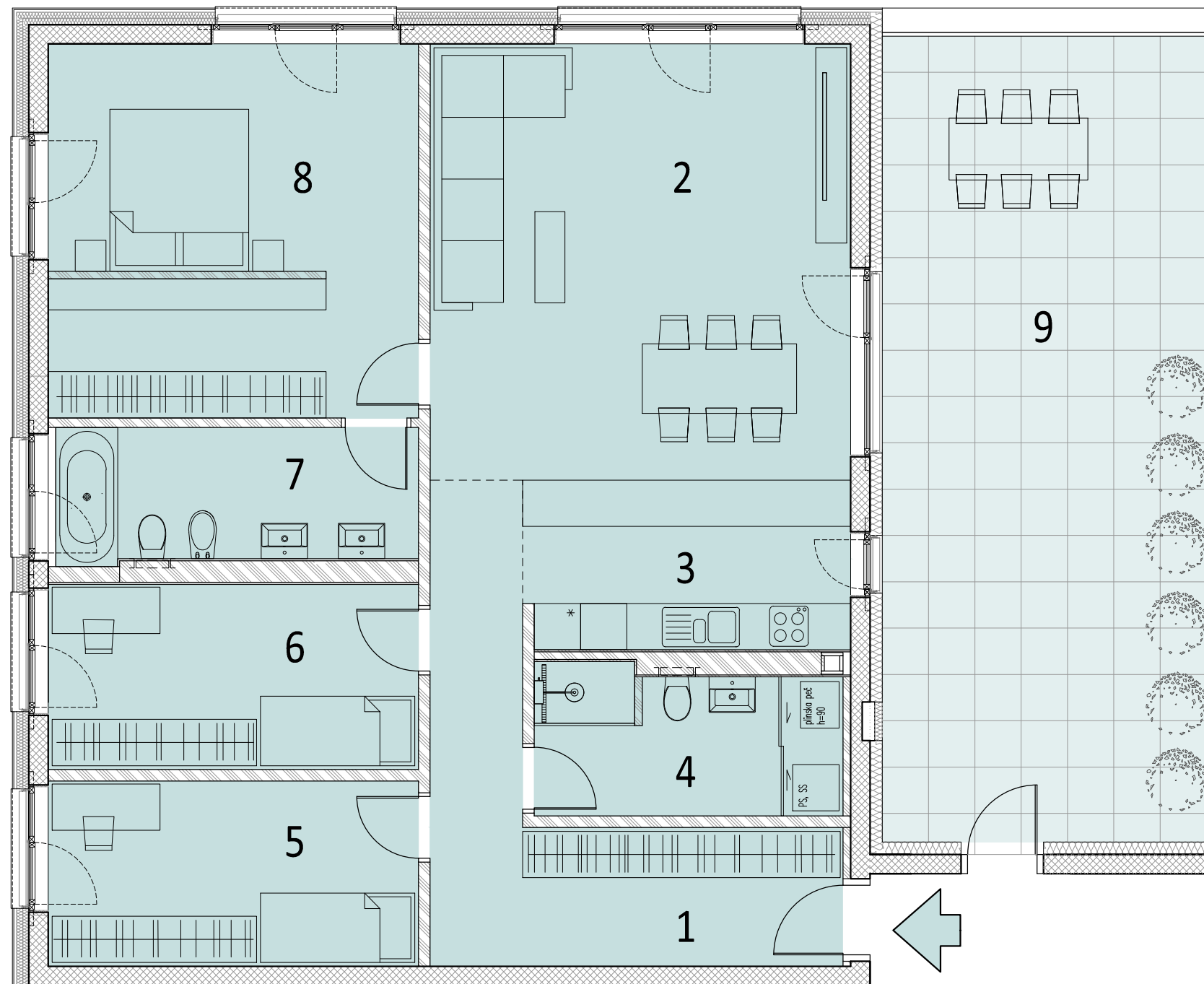


STANOVANJE G

št.	PROSTOR	TLAK	m2	STENE	STROP
1	hodnik	parket	15,02	disp.bar.	disp.bar.
2	dnevna soba	parket	30,79	disp.bar.	disp.bar.
3	kuhinja	parket	9,26	disp.bar.	disp.bar.
4	kopalnica 1	keramika	7,46	keramika	disp.bar.
5	soba 1	parket	11,52	disp.bar.	disp.bar.
6	soba 2	parket	11,52	disp.bar.	disp.bar.
7	kopalnica 2	keramika	8,07	keramika	disp.bar.
8	spalnica	parket	23,26	disp.bar.	disp.bar.
BIVALNA POVRŠ.			116,90 m2		
terasa			46,29 m2		
shramba 7			13,59 m2		
2 parkirni mesti v kleti			27,00 m2		
SKUPAJ			203,78 m2		



TLORIS NADSTROPJA 1:500



PROJEKTANT: